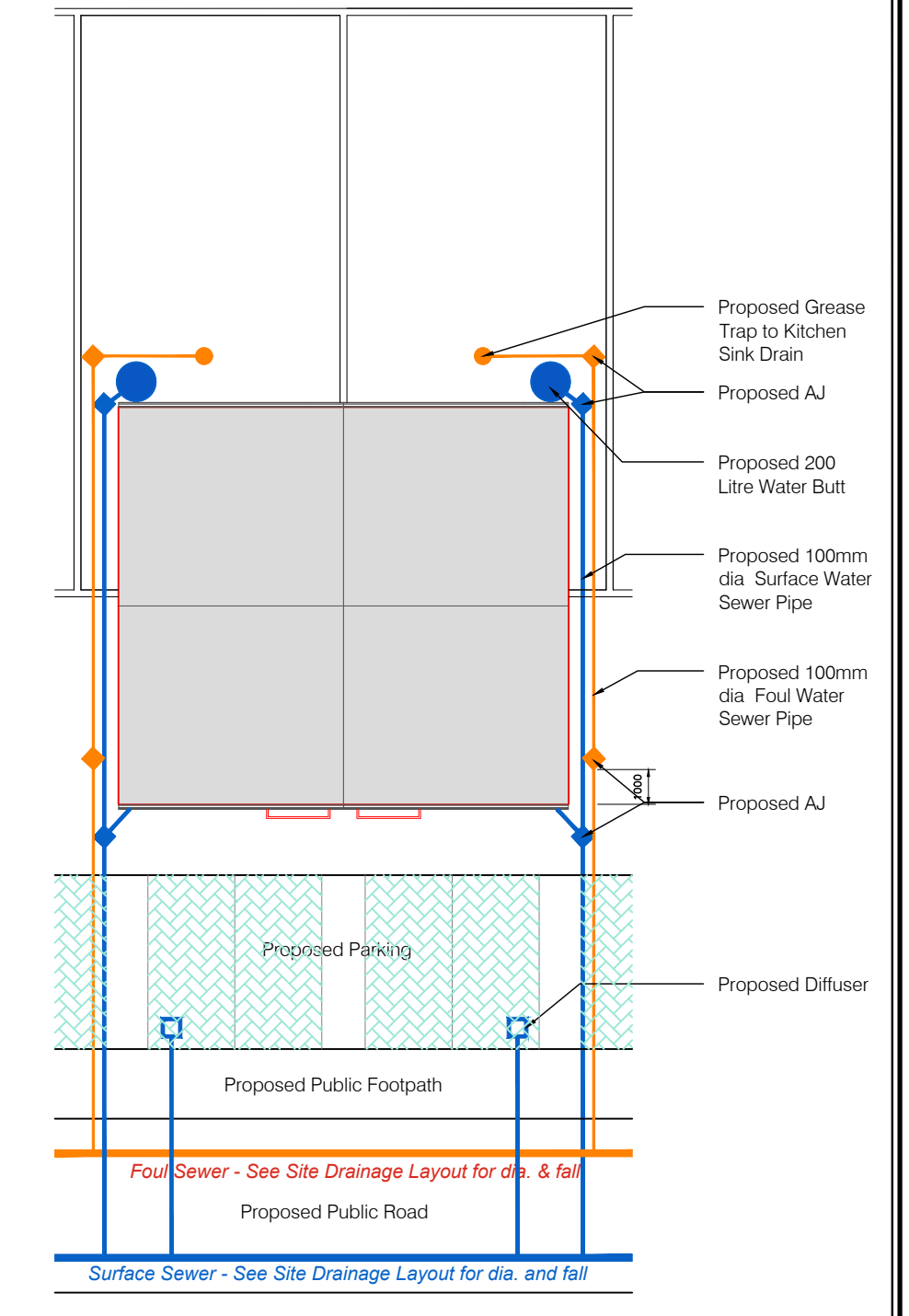


- NOTES:**
- ALL WORKS TO COMPLY WITH IRISH WATER CONNECTION AND DEVELOPER SERVICES WASTEWATER INFRASTRUCTURE STANDARD DETAILS
  1. ALL HOUSE CONNECTIONS IN ACCORDANCE WITH DRG. NO. STD-WW-03
  2. SEPARATION DISTANCES IN ACCORDANCE WITH DRG. NO. STD-WW-05
  3. TRENCH BACKFILLING IN ACCORDANCE WITH DRG. NO. STD-WW-07
  4. MANHOLES CONSTRUCTED IN ACCORDANCE WITH DRG. NO. STD-WW-09 OR 10
  5. BACKDROP MANHOLES IN ACCORDANCE WITH DRG. NO. STD-WW-12
  6. ALL PIPES TO BE uPVC PIPES AND FITTINGS AND COMPLY WITH THE PROVISIONS OF IS EN 1401 2009/2012. PIPES TO BE APPLICATION AREA CODE "UD". STIFFNESS CLASS 8kN/m<sup>2</sup>. PROVISION FOR JETTING SHALL BE BASED ON THE WRc SEWER JETTING CODE OF PRACTICE, JUNE 1997. PIPES TO BE CAPABLE OF RESISTING A MAXIMUM JETTING PUMP PRESSURE 2.600psi (180 BAR) WITHOUT DAMAGE.
  7. PUSH IN RUBBER RING JOINTS SHALL BE PLACED IN ACCORDANCE WITH MANUFACTURER'S INSTRUCTIONS FOR THE PIPE MATERIAL.

- KEY LEGEND**
- Site Outlined in Red
  - Land in Applicant's Ownership Outlined in Blue
  - Proposed Foul Sewer : uPVC pipes and fittings to comply with IS EN 13476 (2007/2009)
  - Proposed Foul Manhole
  - Proposed Inspection Chamber: Inspection chambers to comply with STD-WW-02 and STD-WW-13
  - Existing Public Foul Sewer
  - Proposed Surface Water Sewer : uPVC pipes and fittings to comply with IS EN 13476 (2007/2009)
  - Proposed Surface Water Manhole
  - Proposed 200L Water Butt
  - Proposed Permeable Paving
  - Proposed Rainwater Harvest Tanks



**FOUL MANHOLE SCHEDULE**

MH No.	Cover Level	Invert Level
F 101	66.75	65.85
F 102	65.95	64.98
F 103	66.20	64.99
F 104	65.74	64.30
F 105	65.85	63.67
F 106	65.80	63.64
F 107	65.77	63.43
F 108	66.30	63.12
F 109	65.95	62.74
F 110	66.55	65.39
F 111	66.75	64.39
F 112	66.60	65.46
F 113	66.75	64.56
F 114	66.65	63.50
F 114A	66.71	63.31
F 115	65.95	62.68
F 116	65.66	62.48
FA	65.66	62.45
F 201	66.95	65.40
F 202	66.80	65.71
F 203	66.70	65.19
F 204	66.80	64.73
F 205	66.70	65.79
F 206	66.80	65.43
F 207	66.75	65.28
F 208	66.70	65.49
F 209	66.80	64.83
F 210	66.90	64.67
F 211	67.00	64.59
F 212	67.00	65.15
F 213	67.25	64.21
F 214	66.50	65.43
F 215	66.45	64.48/63.91
F 216	65.85	63.61
F 217	66.00	63.84
F 218	65.85	63.57
F 219	66.20	64.82
F 220	66.35	63.90
F 222	66.15	63.78
F 223	66.10	63.34
F 224	66.50	65.17
F 225	66.35	64.59/63.24
F 226	66.20	63.13
F B	65.90	63.00
F 22	65.66	64.23
F 23	65.54	62.31
F 24	65.70	62.17
F 36	65.80	62.06
F 30	65.90	63.00
F 31	65.80	62.76
F 33	66.06	62.31
F 36	66.32	62.06
F 10	65.60	61.69
F 11	66.33	61.42
F 21	65.92	61.15

**SURFACE MANHOLE SCHEDULE**

MH No.	Cover Level	Invert Level
S101	66.75	65.33
S102	66.35	64.93
S103	66.10	64.70
S104	65.85	64.43
S105	65.74	64.12
S106	65.90	63.93
S107	65.90	64.40
S108	66.00	64.58
S109	65.77	64.02
S110	65.95	64.90
S111	65.85	64.43
S112	66.10	64.05
S113	66.30	63.81
S114	65.95	64.57
S115	66.00	64.38
S116	66.00	64.99
S117	66.05	64.26
S118	66.55	65.13
S119	66.75	63.83
S120	66.20	63.70
S121	66.20	63.67
S122	66.75	63.61
S123	66.80	63.58
S124	66.35	63.45
S125	66.10	63.29
S126	66.10	63.27
S201	66.75	64.81
S202	66.85	64.65
S203	66.90	64.53
S204	66.85	64.49
S205	66.80	64.43
S206	66.95	64.27
S207	66.70	64.20
S208	66.80	63.89
S209	66.75	64.21
S210	66.70	64.20
S211	66.80	63.97
S212	66.90	63.85
S213	67.00	63.84
S214	67.10	63.11
S215	67.00	64.94
S216	67.25	63.51
S217	66.00	64.64
S218	66.30	64.41
S219	66.35	64.32
S222	65.90	63.67
S223	66.20	63.64
S224	66.10	64.60/63.57
S225	66.00	64.20
S226	65.85	64.11/63.5
S228	66.50	63.88
S229	67.00	63.94
S230	66.50	63.78
S231	66.45	63.41
S232A	66.75	63.33
S232	66.75	63.32
S233	66.00	63.29
S234	65.50	63.26
S235	65.35	63.18
S236	64.70	63.16

**REVISION**

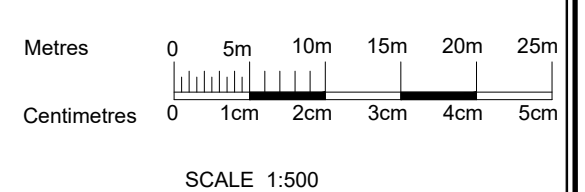
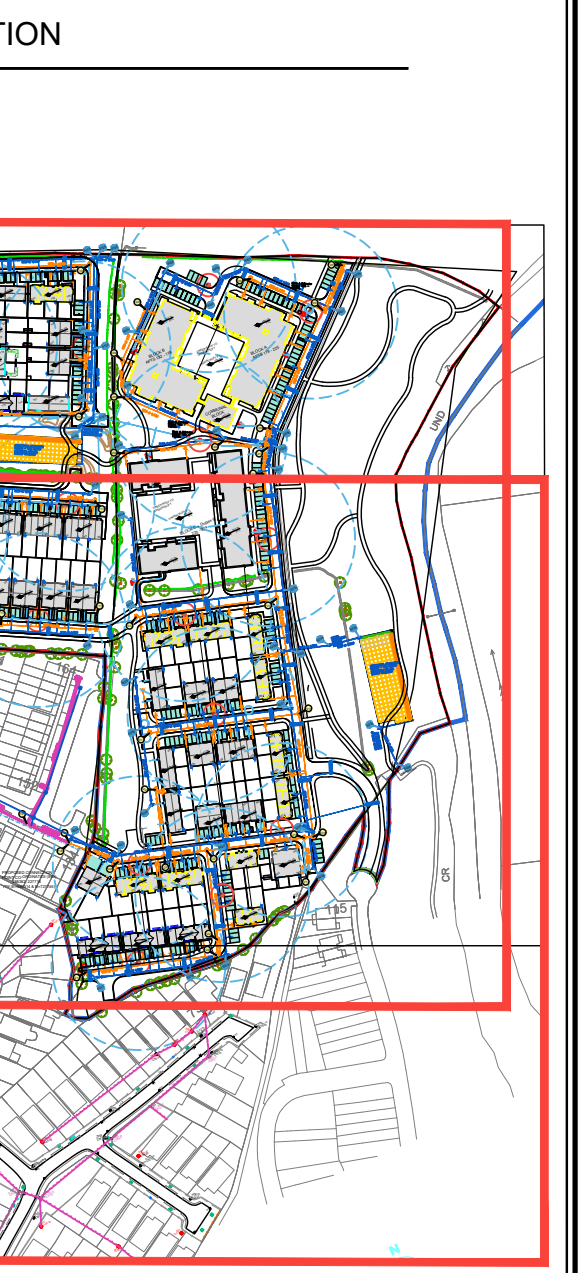
Date	Rev.

**NOTES:**

The Developer/Contractor/Builder is to ensure that the building under construction complies with the 2010 Building Regulations in respect of all trades involved in the construction of this development.

All Site Development works to be carried out in accordance with "Recommendations for Site Development Works for Housing Areas" Dept. of Environment.

Contractors must verify all dimensions at the job before commencing any work. No working dimensions to be scaled. This drawing is for the purpose of planning only. Dimensions to blockwork only.



**Client:** Westar Investments Ltd.

**Job:** Residential SHD Development at Clane, Co. Kildare

**Location:** Clane, Co. Kildare

**Drawing Title:** Foul & Surface Water Layout - Services Sheet 02 of 02

**Scale:** 1:500 @ A0

**MANHOLE LEVELS**

job no: 2017  
date: 18.06.2020  
scale: 1:500 @ A0  
drawn by: Brian Connolly  
cad ref no: 300  
planning ref no:  
file ref no:  
drawing no: 2017-304